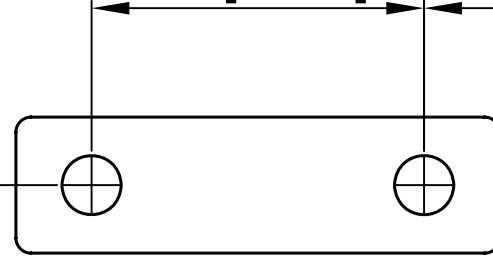


Scale 1:1

22 [7/8]

44 [1 3/4]

152 [6]

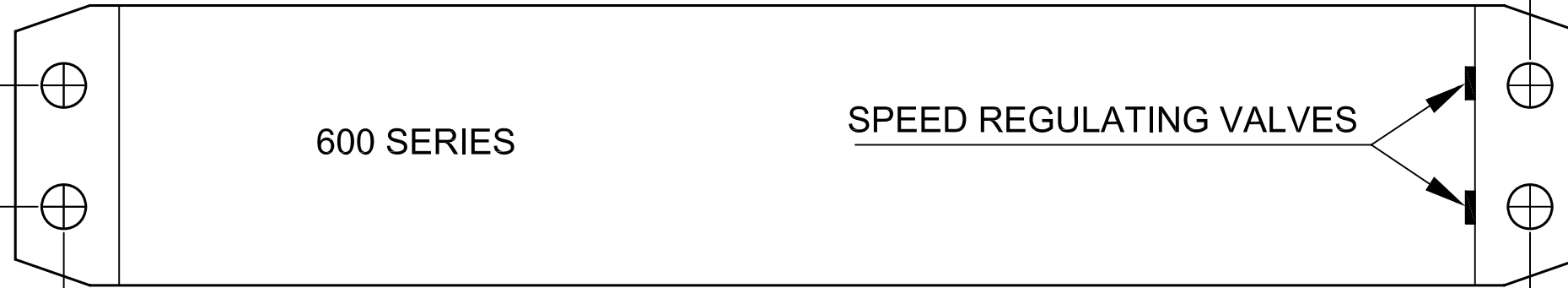


STANDARD APPLICATION TEMPLATE FOR A LEFT HAND DOOR

UPPER FRAME

25 [1]

19 [3/4]



DOOR ↑

EDGE OF DOOR ⇒

FOR OPENING TO 100°

FOR OPENING TO 120°

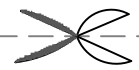
FOR OPENING TO 180°

89 [3 1/2]

152 [6]

230 [9 1/16]

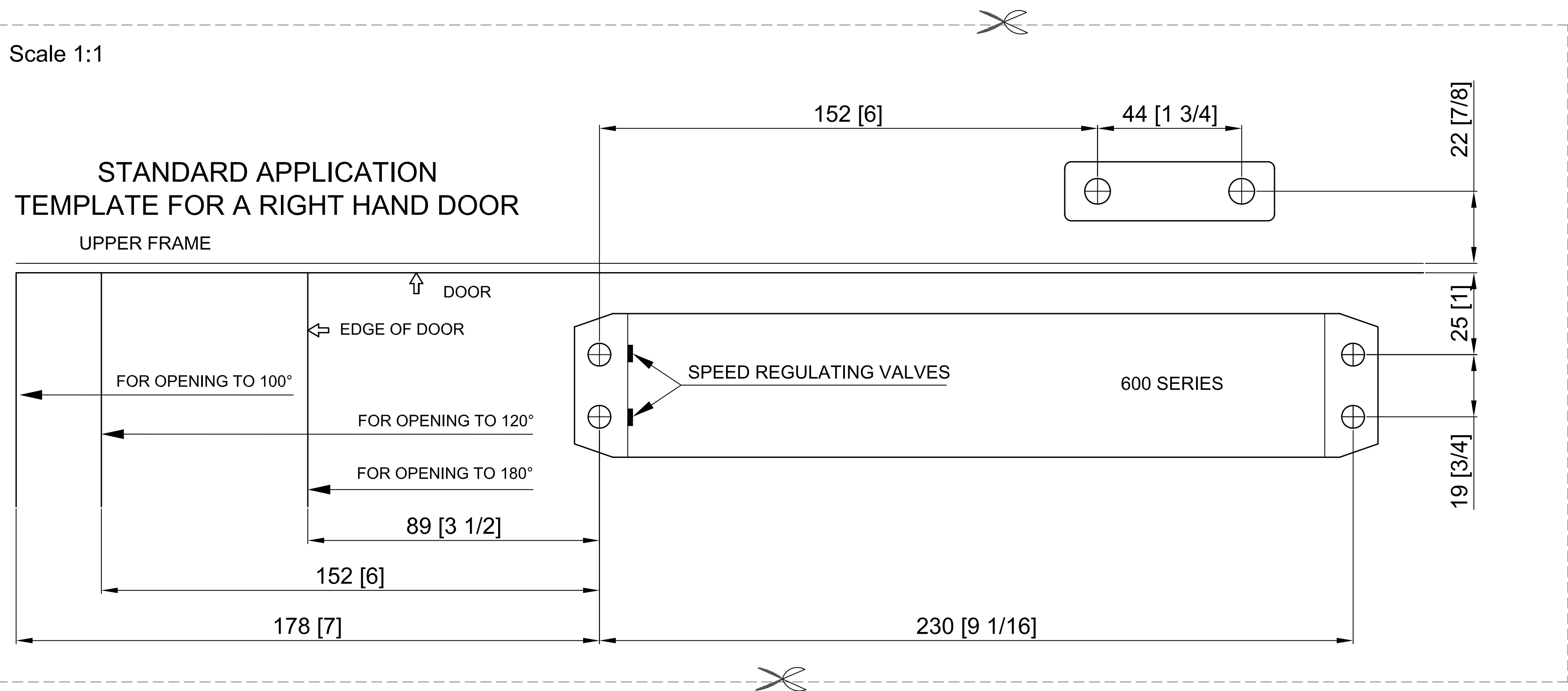
178 [7]



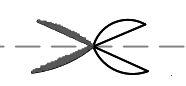
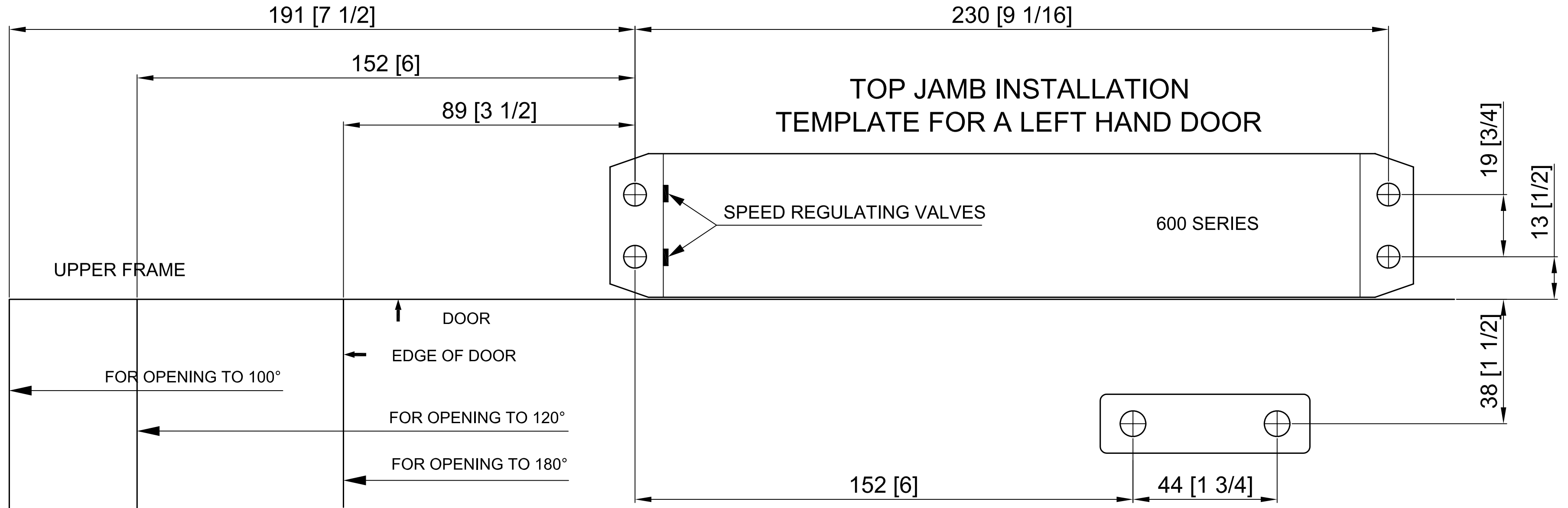
Scale 1:1

STANDARD APPLICATION TEMPLATE FOR A RIGHT HAND DOOR

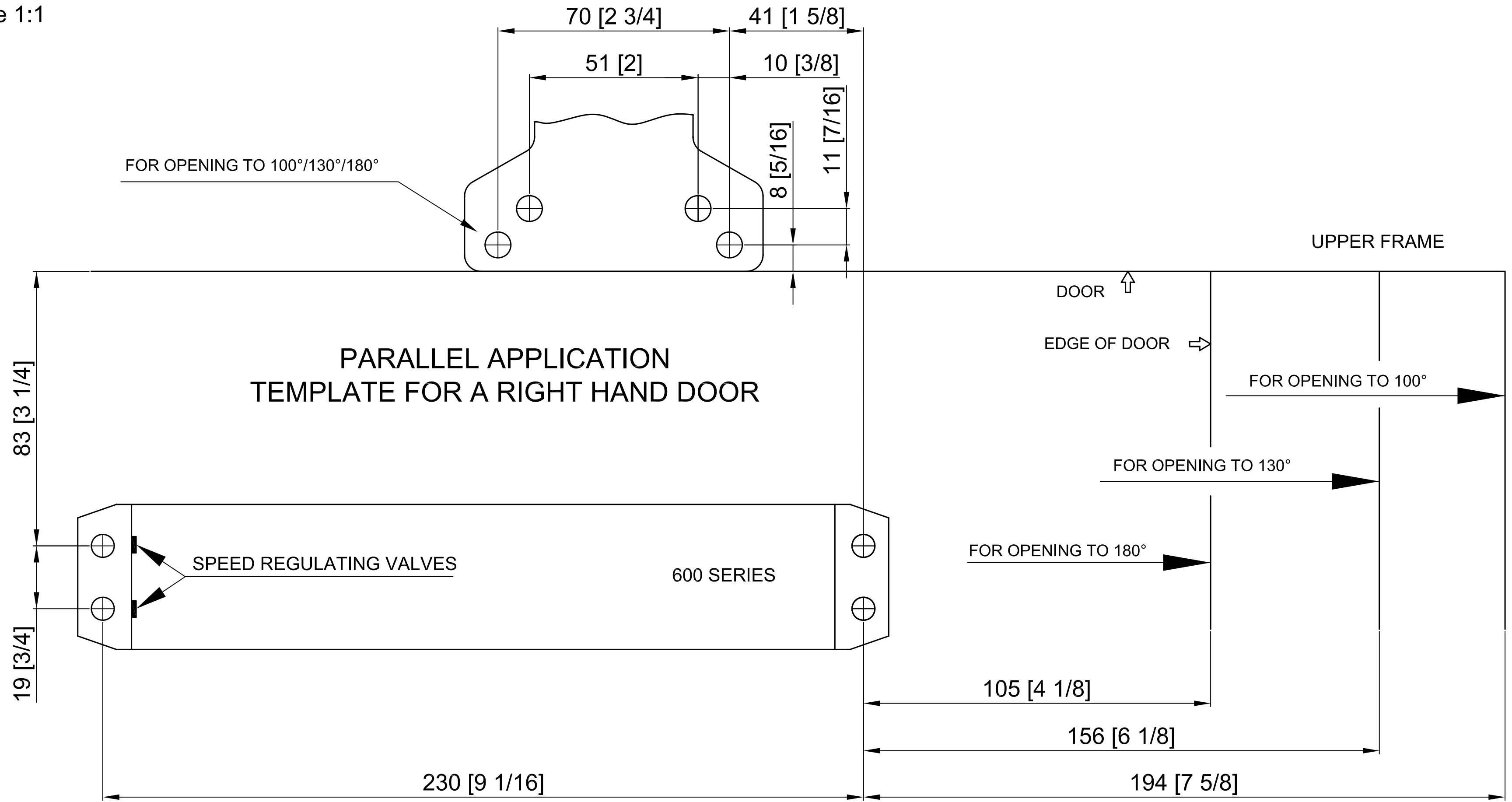
UPPER FRAME



Scale 1:1



Scale 1:1



Scale 1:1

