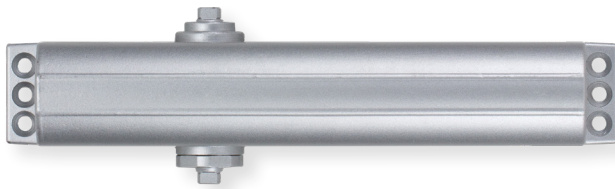


Heavy-Duty (Universal) Commercial Grade 1 Surface Applied

DC700 SERIES



FEATURES

- | | |
|-------------------------|--|
| Performance | <ul style="list-style-type: none"> Complies with ANSI A156.4 Grade 1 2,000,000 cycles UL/ULC listed up to 3 hours fire rated |
| Chassis/Closer | <ul style="list-style-type: none"> Cast aluminum |
| Handing | <ul style="list-style-type: none"> Non-handed |
| Mounting | <ul style="list-style-type: none"> Tri-Pack — regular, top jamb and parallel arm applications. |
| Main Arm | <ul style="list-style-type: none"> Forged steel Accommodates reveals up to 3 1/4" Adjustable extension arm |
| Spring Power | <ul style="list-style-type: none"> Adjustable 1 - 6 sizes |
| Backcheck | <ul style="list-style-type: none"> Adjustable Hydraulic - providing cushioning and preventing uncontrolled openings of the door |
| Valves | <ul style="list-style-type: none"> Adjustable Independent Non-critical (sweep and latch), consistent closing speeds |
| Fasteners | <ul style="list-style-type: none"> Metal screws included for hollow metal and aluminum mounting applications. Wood screws included for wood door mounting applications. Closers are packed with thru-bolts. |
| Door Range | <ul style="list-style-type: none"> Up to 180 degrees |
| Door Preparation | <ul style="list-style-type: none"> 1 1/8" horizontal x 9/16" vertical 6-Hole mounting locations Retrofits traditional closer |
| Cover | <ul style="list-style-type: none"> High impact plastic streamlined cover |
| Warranty | <ul style="list-style-type: none"> Lifetime limited |