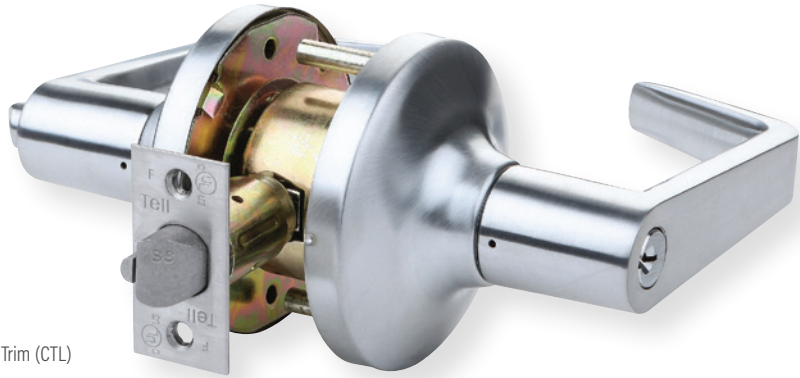


Heavy-Duty Grade 1 Cylindrical
LC1200 SERIES



Cortland Trim (CTL)

FEATURES

- Performance**
- Complies with ANSI A156.2, Series 4000,
 - Grade 1, 800,000 cycles,
 - UL listed for up to 3-hour fire door
 - American Disabilities Act (ADA), ANSI A117.1

- Chassis**
- Cylindrical
 - Steel — corrosion resistant
 - Freewheeling clutch for added security
 - Vandal-proof
 - Independent spring cages

- Lever**
- Solid cast non-handed

- Latch**
- 2 3/4" Backset
 - 1/2" Stainless steel throw
 - 1" Housing diameter
 - 1 1/8" x 2 1/4" faceplate

- Rose**
- 3 1/2" diameter

- Thru-bolts**
- Non-removable thru-bolts standard

- Strike**
- ASA Strike 1 1/4" x 4 7/8"
 - Optional T-Strike 1 1/8" x 2 3/4"
 - Optional F-Strike (full lip)

- Cylinder**
- C keyway (SCC)
 - 6-pin solid brass
 - Keyed different (KD)

- Keys**
- Two nickel silver per lock cylinder

- Door Thickness**
- 1 3/8" - 2"

- Door Preparation**
- 2 1/8" diameter for lever
 - 1" diameter for latchbolt
 - Fits standard 161 door prep with thru-bolting

- Warranty**
- Limited lifetime

LC1200 SERIES

OPTIONS

KEYING	6-pin cylinders, can be pinned to 5-pin.
Cylinders	Arrow A (ARA), Corbin 59A1 (C059A1), Corbin 60 (C06), Corbin Russwin L4 (CL4), Options Kwikset (KW1), Russwin D1 (RD1), Sargent LA (SAL), Schlage E (SCE), Schlage F (SCF), Weiser E (WRE), Yale 8 (YA8), Yale GA (YGA)
Tell Cylinder	Restricted Tell keyway cylinder can key both the cylinder and interchangeable core in one lock. The cylinders and IC cores are interchangeable. Tell keyway cylinder is available only keyed to 6-pin. Tell IC cylinder can be keyed to 6-pin or 7-pin interchangeable core (IC)
IC Keyway Cylinders (Available 6- or 7-Pin)	Best A (BA), Best B (BB), Best C (BC), Best D (BD), Best E (BE), Best F (BF), Best G (BG), Best H (BH), Best J (BJ), Best K (BK), Best L (BL), Best M (BM), Best Q (BQ), Best U (BU), Black construction core (BLK), Less core (00), Not specified (XX)
Keying Options	Grand Master Key (GMK), Construction Master Key (CMK), Master Key (MK), Keyed Different (KD), Keyed Alike (KA), Interchangeable Core uncombined (IC), 0-bitted (OBIT)

AVAILABLE FUNCTIONS

Entry 81	Privacy Bed/Bath 76
Classroom 84	Passage 75
Storeroom 86	Exit Latch 80
Communicating 91	Intruder 110
Hotel 93	Single Dummy 01

LEVER STYLES



Cortland



Buckingham



Sturdee

TELL FINISHES



US26D
Satin Chrome



US32D
Satin Stainless Steel



US3
Polished Brass



US10B
Oil Rubbed Bronze

Heavy-Duty Grade 1 Cylindrical

LC1200 SERIES

ACCESSORIES

LATCHES



CL100181 —
2 3/4" Guarded, US32D

CL100531 —
2 3/4" Guarded, US3

CL100182 —
2 3/4" Guarded with kickoff, US32D

UL/ULC listed guarded latchbolt with deadlatching function. 1/2" throw. 2 3/4" backset. Fits 161 door prep (2 1/8" hole, 1" latch hole).



CL100906 —
2 3/4" Unguarded, US32D

CL100907 —
2 3/4" Unguarded with kickoff, US32D

UL/ULC listed unguarded latchbolt with non-deadlatching function. 1/2" throw. 2 3/4" backset. Fits 161 door prep (2 1/8" hole, 1" latch hole).

STRIKES



CL100186 —
ASA Strike, US32D

CL100187 —
ASA Strike, US3

CL100415 —
ASA Strike, US10B
For metal frames.
(1 1/4" x 4 7/8" x 3/32").



CL100191 —
T Strike, US32D

CL100189 —
T Strike, US3

CL100420 —
T Strike, US10B
For wood frames.
(1 1/8" x 2 3/4" x 3/32").



CL100190 —
F Strike, US32D

CL100192 —
F Strike, US3

CL100581 —
F Strike, US10B
For wood residential applications.
(1 1/8" x 2 1/4" x 3/32").

NON-RESTRICTED KEYWAY



CL100219 —
Cylinder, Schlage C, US26D

CL100584 —
Cylinder, Schlage C, US4
Standard brass 6-pin cylinder SCC keyway, optional keyways available, (see price list).



CL100268 —
IC Core Best A 6 Pin, US26D

CL100270 —
IC Core Best A 7 Pin, US26D

CL100269 —
IC Core Best A 6 Pin, US4

CL100271 —
IC Core Best A 7 Pin, US4
Small format interchangeable core brass cylinder 6-pin standard, 7-pin available. Best "A" keyway standard.

TELL RESTRICTED KEYWAY



Tell Cylinders:

CL101503 —
6-pin Tell cylinder, US26D

CL101504 —
6-pin Tell cylinder, US4



Tell Interchangeable Cores:

CL101499 —
6-pin Tell IC core, US26D

CL101500 —
6-pin Tell IC core, US4

CL101501 —
7-pin Tell IC core, US26D

CL101502 —
7-pin Tell IC core, US4

FINISHES: US32D=Satin Stainless Steel, US3=Bright Brass, US26D=Satin Chrome, US4=Satin Brass, US10B=Oil Rubbed Bronze

LC1200 SERIES

FUNCTION CHART

OUTSIDE	INSIDE	FUNCTION	FEATURES	ANSI
		Entry 81	<ul style="list-style-type: none"> Latchbolt operated by lever from either side Outside lever locks by push button from inside Unlocks by key from outside or rotating inside lever When outside lever locked by push and turn button from inside, key from outside or rotating inside lever retracts latch, does not unlock outside lever 	F81
		Office 82	<ul style="list-style-type: none"> Deadlocking latch bolt operated by lever from either side except when outside lever is locked by push button or other locking device on inside. When outside lever is locked, operating key in outside lever or operating inside lever unlocks push button or other locking device and retracts latch bolt. Closing door does not release push button or other locking device. 	F82
		Classroom 84	<ul style="list-style-type: none"> Latchbolt operated by lever from each side Outside lever locked or unlocked by key from outside Inside lever always operates latch 	F84
		Storeroom 86	<ul style="list-style-type: none"> Latch operated by rotating inside lever or key in outside lever Outside lever always fixed 	F86

OUTSIDE	INSIDE	FUNCTION	FEATURES	ANSI
		Double Cylinder Storeroom 91	<ul style="list-style-type: none"> Deadlocking latchbolt operated by either lever Key in either lever locks or unlocks both levers 	F80
		Privacy Bed/Bath 76	<ul style="list-style-type: none"> Latchbolt operated by lever from either side Outside lever locked by push button on inside Unlocked by emergency release on outside, rotating inside lever, or closing door 	F76
		Passage Hall/Closet 75	<ul style="list-style-type: none"> Latchbolt operated by lever from either side at all times 	F75
		Exit Latch 80	<ul style="list-style-type: none"> Latchbolt operated by knob from one side at all times 	—
		Single Dummy 01	<ul style="list-style-type: none"> Pull knob one side No mechanical operation 	—

HOW TO ORDER (see product page for complete lists of options)

TRIM	TYPE	GRADE	PRODUCT FAMILY	FUNCTION	LEVER STYLE	FINISH	BACKSET	STRIKE	KEYWAY CYLINDER	IC KEYWAY CYLINDER	KEYING	
				01	- Single Dummy					XX	- Not Specified	
				84	- Classroom*					00	- Less Core	
				76	- Privacy	US10B	- Oil Rubbed Bronze			BLK	- Construction Core - Black	
				75	- Passage	US3	- Bright Brass	A	- ASA	BC	- Best C	
				86	- Storeroom*	US26D	- Satin Chrome	F	- Full Lip	BB	- Best B	
L	- Lever	1	2	81	- Entry*	US32D	- Satin Stainless Steel	T	- T	BA	- Best A	
L	C	1	2	81	CTL	US32D	234	T	TELL [†]	TELL IC [*]	GMK	
	C	- Cylindrical			CTL	- Cortland	234	- 2 3/4"	TELL	- Tell	OBIT	- 0-Bitted
					BUC	- Buckingham	238	- 2 3/4"	SCC	- C Keyway (SCC) 6-Pin	KA	- Keyed Alike
					STR	- Sturdee			ARA	- Arrow A	KD	- Keyed Different
									C059A1	- Corbin 59A1	MK	- Master Key
									CL4	- Corbin Russwin L4	CMK	- Construction Master Key
									KW1	- Kwikset KW1	GMK	- Grand Master Key
									WRE	- Weiser E		

NOTES

- Locks furnished keyed different (KD) unless specified.
- Locks with keyed functions furnished with C Keyway (SCC) standard.
- Other keyways are available for an additional charge:
Arrow ARI, Corbin 60/L4, Falcon/Weiser, Kwikset, Russwin D1, Sargent LA/RA, Yale 8.
- Locks furnished with a T strike. Substitute ASA or F strikes at no additional charge.
- Locks furnished with 2 3/4" latchbolt. Substitute 2 3/8" at no additional charge.
- Other finishes available, consult factory.
- Special order keyways available, allow 4-6 weeks for delivery!

* IC Cylinders available, come in Satin Chrome (26D) only.

† Choose one keyway format: either non-IC Keyway cylinder or IC Keyway cylinder.

Most cylinders come keyed 6-pin, can be keyed 5-pin on request;
Tell Restricted Keyway cylinder is only keyed to 6-pin.
IC cylinders can be keyed 6- or 7-pin.