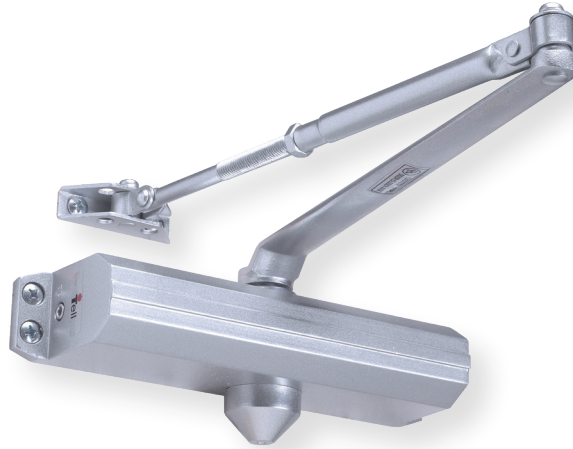


Heavy-Duty Commercial Grade 1 Surface Applied

DC600 SERIES



FEATURES

- | | |
|-------------------------|---|
| Performance | <ul style="list-style-type: none"> Complies with ANSI A156.4 Grade 1 2 million cycles UL/ULC listed up to 3 hours fire rated |
| Chassis/Closer | <ul style="list-style-type: none"> Cast aluminum |
| Handing | <ul style="list-style-type: none"> Non-handed |
| Mounting | <ul style="list-style-type: none"> Tri-Pack — regular, top jamb and parallel arm applications. |
| Main Arm | <ul style="list-style-type: none"> Forged steel Accommodates reveals up to 3 1/4" Adjustable extension arm |
| Spring Power | <ul style="list-style-type: none"> Adjustable 1 - 4 and 3 - 6 sizes |
| Backcheck | <ul style="list-style-type: none"> Adjustable Hydraulic - providing cushioning and preventing uncontrolled door openings. |
| Valves | <ul style="list-style-type: none"> Adjustable, independent Non-critical (sweep and latch) Consistent closing speeds |
| Fasteners | <ul style="list-style-type: none"> Metal screws included for hollow metal and aluminum mounting applications. Wood screws included for wood door mounting applications. Thru-bolts optional. |
| Door Range | <ul style="list-style-type: none"> Up to 180 degrees |
| Door Preparation | <ul style="list-style-type: none"> 9 1/16" horizontal x 3/4" vertical 4-Hole mounting locations Retrofits traditional closer |
| Warranty | <ul style="list-style-type: none"> Lifetime limited |

DC600 SERIES

OPTIONAL FEATURES

Covers High impact plastic and plated kit: cover, arm & bracket.

Hold Open Arm Forged steel with hold open adjustable from 80 to 135 degrees

Sex Nuts For 1 3/8" or 1 3/4" thick doors

DOOR SIZING

Regular/Top Jamb Installation

CLOSER	DOOR TYPE	DOOR WIDTH				
		2' min	2.5' max	3' max	3.5' max	4' max
640	Interior	N/A	N/A	✓	✓	✓
	Exterior	N/A	N/A	✓	♿	♿
641	Interior	✓	✓	♿	♿	N/A
	Exterior	✓	✓	♿	N/A	N/A
643 - 646	Interior	N/A	N/A	643	644	645
	Exterior	N/A	643	644	645	646

Parallel Arm Installation

CLOSER	DOOR TYPE	DOOR WIDTH				
		2' min	2.5' max	3' max	3.5' max	4' max
640	Interior		✓	✓	✓	✓
	Exterior		✓	♿	♿	N/A
641	Interior		✓	♿	N/A	N/A
	Exterior		✓	N/A	N/A	N/A
643 - 646	Interior		643	644	645	646
	Exterior		644	645	646	N/A

✓ = Recommended

N/A = Not applicable or recommended

♿ = Opening force 5 lbs. on interior and 8.5 lbs. on exterior